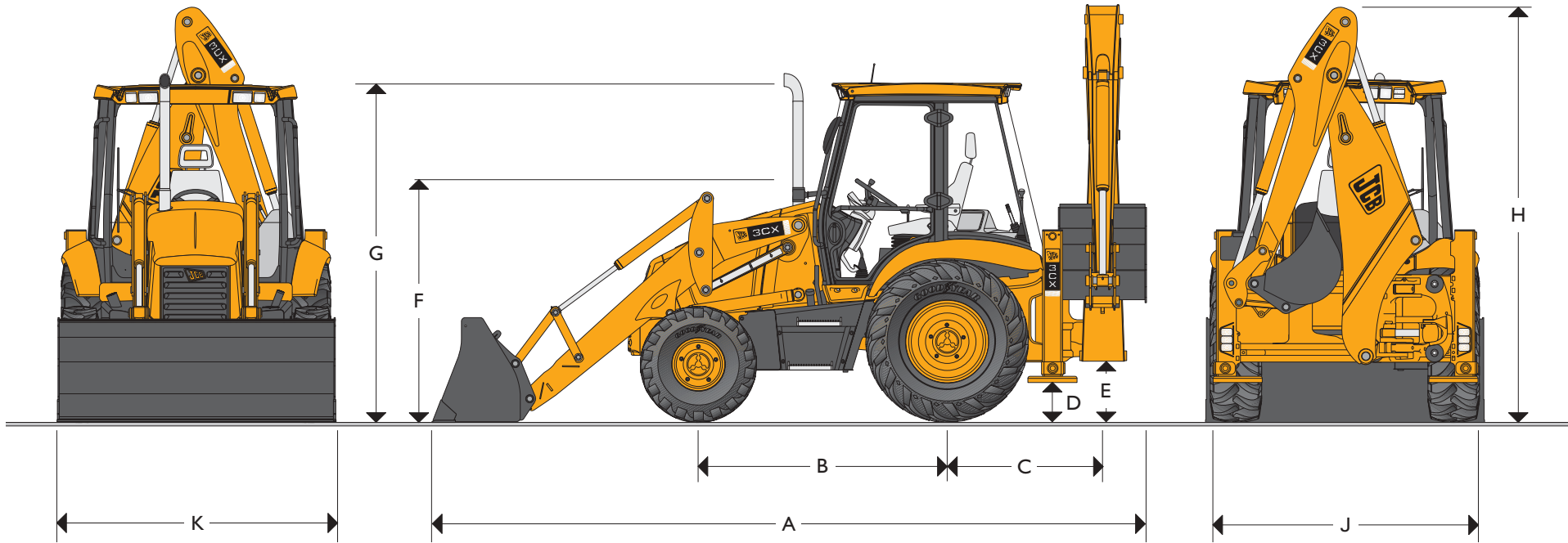




# JCB BACKHOE LOADER | 3CX



MAX. ENGINE POWER: 68.5kW (92hp)  
 MAX. BACKHOE DIG DEPTH: 5.46 metres (17ft 11in)  
 MAX. LOADER CAPACITY: 1.1m<sup>3</sup> (1.44yd<sup>3</sup>)



## STATIC DIMENSIONS

JCB Backhoe Loaders feature heavy duty one piece mainframe, componentised driveline and fully enclosed engine compartment. All fluid and component compartments are lockable using the ignition key.

| Machine model                              | 3CX         |
|--|-------------|
|  | m (ft-in)   |
| A Total travel length                      | 5.62 (18-5) |
| B Axle centreline distance                 | 2.17 (7-1)  |
| C Slew centre to rear axle centre distance | 1.36 (4-6)  |
| D Stabiliser feet clearance                | 0.37 (1-2)  |
| E Kingpost clearance                       | 0.52 (1-8)  |
| F Steering wheel centre height             | 1.94 (6-4)  |
| G Cab roof height                          | 2.87 (9-5)  |

| Machine model            | 3CX          |
|--------------------------|--------------|
|                          | m (ft-in)    |
| H Total travel clearance | 3.61 (11-10) |
| J Rear frame width       | 2.36 (7-9)   |
| K Shovel width           | 2.35 (7-8)   |
| J* Rear frame width      | 2.24 (7-4)   |
| K* Shovel width          | 2.23 (7-4)   |

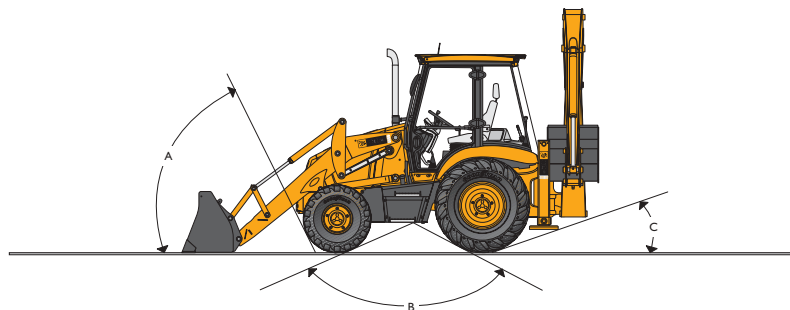
\* Narrow option



# JCB BACKHOE LOADER | 3CX



## GROUND LINE ANGLES



- A Approach angle 66°
- B Interference angle/ramp to ground plane 120°
- C Departure angle 20°

## OPERATING WEIGHTS

Operating weight includes machine equipped with cab, 610mm excavator bucket and full fuel tank.

| Machine model                         | 3CX          |
|---------------------------------------|--------------|
|                                       | kg (lb)      |
| Standard dipper and GP shovel         | 7370 (16250) |
| Extradig and 6-in-1 shovel with forks | 8070 (17800) |

## ENGINE

Four cylinder, direction injection diesel. Gear driven water pump, cast iron engine sump, spin-on oil and fuel filters, water separator, dual element air cleaner, thermostart cold start aid.

| Machine model                                   |             | Naturally aspirated | Turbo        |
|---|-------------|---------------------|--------------|
| Manufacturer                                    |             | JCB 1004-42         | JCB 1004-40T |
| Displacement                                    |             | 4.23 Ltr            | 3.99 Ltr     |
| No. of cylinders                                |             | 4                   | 4            |
| Bore size                                       | mm          | 103                 | 100          |
| Stroke  | mm          | 127                 | 127          |
| Rated engine RPM                                |             | 2200                | 2200         |
| <b>Power ratings</b>                            |             |                     |              |
| Gross ISO/TR 14396 and SAE J1995                | kW (HP)     | 56 (75)             | 68.5 (92)    |
| SAE Net ISO 9249 (EEC 80/1269 and SAE J1349)    | kW (HP)     | 53.3 (71.5)         | 63.1 (84.5)  |
| <b>Torque rating</b>                            |             |                     |              |
| Gross ISO/TR 14396 and SAE J1995                | Nm (lbf ft) | 290 (214)           | 370 (233)    |
| SAE Net ISO/TR 9249 (EEC 80/1269) and SAE J1349 | Nm (lbf ft) | 284 (210)           | 361 (266)    |
| Max. torque RPM                                 |             | 1400                | 1400         |

## STEERING

Full power hydrostatic system utilising the main hydraulic pump via a steering priority valve. In the event of engine failure, emergency steering is maintained.

| Machine model                         | 3CX – 2          | 3CX – 4          |
|---------------------------------------|------------------|------------------|
| Axles                                 | Steer only       | Steer drive      |
| Steering turns – lock to lock         | 2¾               | 2¾               |
|                                       | <b>m (ft-in)</b> | <b>m (ft-in)</b> |
| Kerb – kerb turning circle – unbraked | 8.1 (26-7)       | 8.1 (26-7)       |
| Loader clearance circle – unbraked    | 10.4 (34-1)      | 10.4 (34-1)      |
| Kerb – kerb turning circle – braked   | 6.9 (22-8)       | 6.9 (22-8)       |
| Loader clearance circle – braked      | 9.5 (31-2)       | 9.5 (31-2)       |

(Depending on tyre size, ground conditions etc.)

## ENGINE SUPPORT SYSTEM

Engine support system is designed for ease of daily checks, routine maintenance and longer service intervals.

|                                   |  |
|-----------------------------------|--|
| <b>Fuel type</b>                  | Diesel.  |
| <b>Fuel filter</b>                | Replaceable spin-on cartridge plus water/sediment separator.   |
| <b>Air cleaner</b>                | Dual, dry element cyclonic type.   |
| <b>Oil filter and lubrication</b> | Full flow, spin-on type filter.  |
| <b>Cooling system</b>             | Hot climate specification, pressurised 7 psi (0.5 bar) suction fan. Pressurised recovery tank with integral filler neck. |

## ELECTRICAL AND INSTRUMENTATION

12 volt negative ground, utilising wiring and connectors meeting IP69 water ingress test standard. Central fuse panel supplemented with main circuit breakers at battery positive terminal.

|                             |   |
|-----------------------------|---|
| <b>Gauges</b>               | Tachometer, engine coolant temp, fuel level, hourmeter, clock.  |
| <b>Warning system</b>       | Audible and visual system for engine oil, transmission, park brake, battery, air cleaner, alternator. |
| <b>Battery</b>              | 115 A/hr.   |
| <b>Pre-wire</b>             | Radio speakers (cab), beacon (all).   |
| <b>Horn</b>                 | Controlled from both front and rear.  |
| <b>Alternator</b>           | 75 amp. 85 amp option on turbocharged engine.   |
| <b>Front working lights</b> | 2 twin beam fixed position.   |
| <b>Rear working lights</b>  | 4 adjustable.   |



# JCB BACKHOE LOADER | 3CX



## TRANSMISSION

The JCB Transmissions are designed and built specifically for JCB Backhoe Loaders. They feature synchronised shifting in all gears. Powershuttle between forward and reverse. Ground speeds are designed to maximise production. An optional 4 speed powershift transmission enables effortless and fast gear changes. Gears are selected through a twist grip control on the column mounted forward/reverse level

| Machine model          | 3CX                                   | 3CX              |
|------------------------|---------------------------------------|------------------|
| Manufacturer           | JCB                                   | JCB              |
| Type                   | Syncroshuttle                         | Powershift       |
| Torque converter       | 305mm (12")                           | 305mm (12")      |
| Torque converter ratio | 3.0:1                                 | 2.54:1           |
| Gears forward/reverse  | 4/4                                   | 4/4              |
| Gear selection         | Manual                                | Powershift       |
| Shuttle control – F/R  | Power shuttle                         | Power shuttle    |
| <b>Travel speeds</b>   | <b>kph (mph)</b>                      | <b>kph (mph)</b> |
| <b>Tyres equipped</b>  | <b>Front 12.5 x 18 Rear 18.4 x 26</b> |                  |
| Gear 1                 | 5.5 (3.4)                             | 5.2 (3.2)        |
| Gear 2                 | 8.9 (5.5)                             | 9.7 (5.9)        |
| Gear 3                 | 19.1 (11.9)                           | 22.4 (13.8)      |
| Gear 4                 | 36.1 (22.4)                           | 39.5 (24.7)      |

## FRONT AXLE

JCB front axles are designed and built specifically for backhoe loaders and accept a wide variety of tyre combinations.

| Machine model       | 3CX – 2                                  | 3CX – 4           |
|---------------------|--|-------------------|
| Type                | JCB steer drive with torque proportional |                   |
| <b>Axle ratings</b> | <b>kg (lb)</b>                           | <b>kg (lb)</b>    |
| Static load rating  | 16500 (36375)                            |                   |
| Dynamic load rating | 5500 (12125)                             |                   |
| Oscillation angle   | 16°                                      | 16°               |
| Steering ram        | Powered track rod                        | Powered track rod |

## REAR AXLE

JCB rear axles are designed and built specifically for backhoe loaders and accept a wide variety of tyre combinations.

| Machine model       | 3CX  |
|---------------------|--|
| Type                | JCB Epicyclic hub reduction with torque proportional |
| Limited slip        | Option   |
| <b>Axle ratings</b> | <b>kg (lb)</b>                                       |
| Static load rating  | 21000 (46296)  |
| Dynamic load rating | 7000 (15435)   |

## CAB

Excellent visibility (and safety) is provided by the extra large tinted glass areas of 6.4 sq m (70 sq ft). Cab frame is ROPS and FOPS approved for maximum operator protection. ISO standard 3471 and 3449 (SAE J1040 and J231).

- A fully adjustable seat with lumbar support combines with ergonomically positioned controls to minimise operator fatigue.
- The in-cab noise levels are the lowest in the business for maximum operator comfort.
- A radio location is provided as standard plus twin speakers for stereo sound.
- Cab provides easy access through either a single door or two door frame. Rear side windows open either partially or fully for extra ventilation. Standard features include: lap seat belt, 3 speed fresh air/recycle heater, front and rear screen wash/wipers, front and rear horn, exterior mirrors, and flat easy-clean floor mat.
- The instrument panel is positioned to the right-hand side for ease of viewing from either the loading or excavating position and has an optional lockable cover for vandal proofing. Engine speed, fuel and coolant temperature gauges, (and clock on cab builds) are mounted in the panel.
- A high performance air conditioning system is optionally available on turbo builds providing the operator with a cool working environment when working in high temperatures.
- Static or mechanical suspension seat gives the operator a comfortable operating position.
- An optionally available heated air suspension seat gives the operator the ultimate comfort with automatic compensation for weight.

## JCB PRECISION CONTROL (Optional)

JCB Precision Control backhoe and loader controls offer smooth, low effort and productive operation while reducing operator fatigue. Excavator control joysticks are integrated into the seat armrests, which provides increased legroom, improved job visibility and hydraulic excavator ergonomics. The pilot loader joystick is a separate set of levers, simulating the traditional manual levers, with JCB's unique shadowing auxiliary lever providing unmatched feel and control.

Best in class hydraulic modulation combined with the greatest digging performance, means that the JCB Precision Control is unmatched in any backhoe loader.

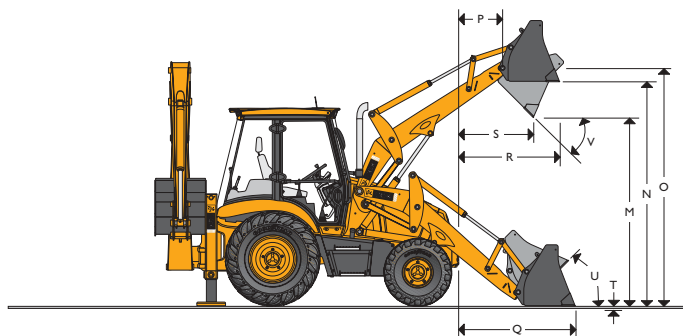
\*Not available on naturally aspirated engines.



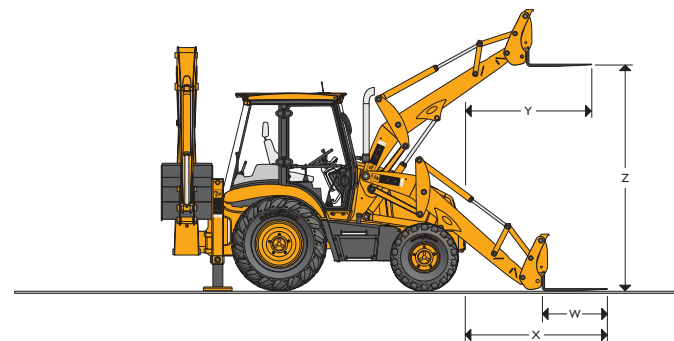
# JCB BACKHOE LOADER | 3CX



## LOADER DIMENSIONS



## LOADER ATTACHMENTS



## LOADER DIMENSIONS

|  | GP shovel<br>m (ft-in) | 6-in-1 shovel<br>m (ft-in) |
|--|------------------------|----------------------------|
| Overall width with bucket                |                        |                            |
| M Dump height                            | 2.74 (9-0)             | 2.72 (8-11)                |
| N Load over height                       | 3.23 (10-7)            | 3.20 (10-6)                |
| O Loader hinge pin height                | 3.45 (11-4)            | 3.45 (11-4)                |
| P Pin forward reach                      | 0.36 (1-2)             | 0.36 (1-2)                 |
| Q Reach at ground (toe plate horizontal) | 1.42 (4-8)             | 1.37 (4-6)                 |
| R Max. reach at full height              | 1.20 (3-11)            | 1.15 (3-9)                 |
| S Reach at full height fully dumped      | 0.83 (2-9)             | 0.78 (2-7)                 |
| T Dig depth                              | 0.07 (0-3)             | 0.10 (0-4)                 |
| U Roll back at ground                    | 45°                    | 45°                        |
| V Dump angle                             | 43°                    | 43°                        |
| Jaw opening width                        | –                      | 0.95 (3-1)                 |

## LOADER ATTACHMENTS – Direct Mount

Loader buckets are listed according to size and application. Numbers listed below models are bucket shipping weights. All buckets are drilled to accept optional auxiliary cutting edge or teeth. Flat top box section provides rigidity and assists in bucket levelling.

| G.P. Shovel       |   |  |
|-------------------|---|--|
| Width mm (ft-in)  | Capacity SAE                            |  |
|                   | Rated m <sup>3</sup> (yd <sup>3</sup> ) | Struck m <sup>3</sup> (yd <sup>3</sup> ) |
| 2235 (7-4)        | 1.0 (1.32)                              | 0.83 (1.09)                              |
| 2350 (7-8)        | 1.1 (1.44)                              | 0.91 (1.19)                              |
| 6-in-1 Clamshovel |   |  |
| Width mm (ft-in)  | Capacity SAE                            |  |
|                   | Rated m <sup>3</sup> (yd <sup>3</sup> ) | Struck m <sup>3</sup> (yd <sup>3</sup> ) |
| 2235 (7-4)        | 1.0 (1.32)                              | 0.76 (1.00)                              |
| 2350 (7-8)        | 1.0 (1.32)                              | 0.76 (1.00)                              |

## LOADER DIMENSIONS – Forklift Performance Data

|                               | 6-in-1 shovel mounted forks | Quickhitch mounted forks |
|-------------------------------|-----------------------------|--------------------------|
|                               | m (ft-in)                   | m (ft-in)                |
| W Forks – tine length         | 1.1 (3-7)                   | 1.1 (3-7)                |
| Forks – tine width            | 0.08 (0-3.1)                | 0.08 (0-3.1)             |
| X Forks reach at ground level | 2.66 (8-9)                  | 2.03 (6-8)               |
| Y Forks reach at full height  | 2.25 (7-5)                  | 1.72 (5-8)               |
| Z Forks lift height – max.    | 2.92 (9-7)                  | 3.27 (10-9)              |
| Fork spacing – min            | 0.2 (0-8)                   | 0.2 (0-8)                |
| Fork spacing – max            | 2.17 (7-3)                  | 1.03 (3-4)               |
| SWL @ 500mm load centres      | kg (lb) 1000 (2205)         | 2000 (4410)              |

## LOADER

JCB loaders provide parallel lift self levelling on the up and down cycle enhancing load retention and use of optional pallet forks. High capacity buckets combined with high lift and breakout forces maximise productivity.

|  |           | G.P. Shovel  | 6-in-1 Clamshovel |
|--|-----------|--------------|-------------------|
| Bucket breakout force                      | kgf (lbf) | 6010 (13250) | 6500 (14340)      |
| Loader arm breakout force                  | kgf (lbf) | 5300 (11685) | 4850 (10690)      |
| Lift capacity to full height (2235mm wide) | kg (lb)   | 3320 (7320)  | 2980 (6555)       |
| Lift capacity to full height (2350mm wide) | kg (lb)   | 3300 (7270)  | 2930 (6445)       |
| 6-in-1 bucket clamp force                  | kg (lb)   | –            | 2940 (6480)       |



# JCB BACKHOE LOADER | 3CX



## BRAKES

The JCB braking system ensures effective, fade-free braking. The self-adjusting, multi-disc arrangement is inboard mounted and is oil immersed for minimum maintenance and a long operating life.

- A 3 position switch allows the selection of 2 wheel drive with two wheel braking; 2 wheel drive with four wheel braking or 4 wheel drive with four wheel braking.
- All machines are fitted with servo assisted brakes as standard for low effort braking.
- Twin brake pedals provide tighter turning circle and enhanced steering control on slippery ground.
- Automatic compensation ensures 'straight' machine braking.
- Disc diameter: 220 mm (8.7 in). Friction area: 129,000 sq.mm (200 sq. in) per brake.
- The independent parking brake is mounted on the transmission output shaft and will hold the machine on 1:3 gradients. It is an over-centre type, adjustable within the cab, with transmission disconnect to prevent premature brake pad wear. Park brake disc diameter: 280 mm (11 in). Friction area: 5416 sq.mm (8.4 sq. in).

## TYRES

|              |  |
|--------------|--|
| <b>Front</b> | 12.0 x 18, IOPR Industrial<br>12.5 x 18, IOPR Industrial<br>335/80 x 18, Radial Traction<br>400/70 x 18, Radial Industrial<br>12.5 x 20, IOPR Industrial |
| <b>Rear</b>  | 16.9 x 28, I2PR Traction or Industrial<br>18.4 x 26, I2PR Traction or Industrial<br>16.9 x 28, Radial Traction<br>480/80 x 26, Radial Industrial         |

## SMOOTH RIDE SYSTEM (Optional)

The JCB Smooth Ride System (SRS) consists of a dry nitrogen and oil filled accumulator installed in line with the loader lift cylinders. When activated, the Smooth Ride System allows the loader arms to float. This action counteracts variations in road or site surfaces and provides the operator with a smooth ride.

**Activation** Electric Switch on Instrument Panel. Manually controlled by the operator for maximum benefit and user flexibility.

## JCB POWERSLIDE

Exclusive to JCB, this option enables the excavator's sideshift carriage to be hydraulically powered across the rearframe by the operation of a pedal in the cab.

With this feature there is no need to "push" the carriage across with the bucket avoiding ground damage and the need to relocate the whole machine.

## HYDRAULIC SYSTEM

The Open Centre system uses twin gear pumps and Hydraulic Speed Control (HSC) with a power modulation valve that automatically varies hydraulic power to match digging conditions for extra performance and power.

- Open centre hydraulic system using simple and reliable high efficiency gear pumps.
- A Power Modulation Valve automatically varies the hydraulic power to match digging conditions to improve performance and efficiency – automatically dumps one pump when 4th gear selected on powershift models.
- The HSC switch enables controlled use of hydraulic response depending upon application.
- Easily used, ergonomically positioned levers give excellent control of the loader and backhoe, thus reducing operator fatigue.
- An independent pump powers the Extradig dipper so that it can extend or retract without breaking the digging cycle. This allows faster cycle times and simultaneous use of the telescopic and normal excavator actions in operations such as grading and bank dressing.
- A full flow 10 micron filter ensures that oil stays free of contaminants.

| Engine                 | Naturally aspirated | Turbo           |
|------------------------|---------------------|-----------------|
|                        | l/min (gal/min)     | l/min (gal/min) |
| Main pump output       | 73 (16)             | 79 (17.5)       |
| Second pump output     | 51 (11.5)           | 57 (12.5)       |
|                        | bar (lbf/sq in)     | bar (lbf/sq in) |
| System relief pressure | 227 (3300)          | 227 (3300)      |

## SERVICE CAPACITIES

| Machine model               | 3CX        |
|-----------------------------|------------|
|                             | ltr (gal)  |
| Cooling system              | 23 (5)     |
| Fuel tank                   | 160 (34.5) |
| Engine oil with filter      | 10 (2.2)   |
| Gearbox with filter         | 16 (3.5)   |
| Rear axle                   | 16 (3.5)   |
| Front drive axle            | 16 (3.5)   |
| Hydraulic system incl. tank | 132 (29)   |



# JCB BACKHOE LOADER | 3CX



## BACKHOE ATTACHMENTS – Standard Profile Bucket

| Width*   | Capacity SAE                            |  | Weight (+ Teeth) |       |
|----------|---|--|------------------|-------|
|          | Rated m <sup>3</sup> (ft <sup>3</sup> ) | Struck m <sup>3</sup> (ft <sup>3</sup> ) | kg (lb)          | Teeth |
| 305 (12) | 0.06 (2 <sup>1</sup> / <sub>6</sub> )   | 0.05 (1 <sup>3</sup> / <sub>4</sub> )    | 102 (225)        | 3     |
| 400 (16) | 0.09 (3)                                | 0.07 (2 <sup>1</sup> / <sub>2</sub> )    | 109 (240)        | 3     |
| 457 (18) | 0.12 (4 <sup>1</sup> / <sub>4</sub> )   | 0.09 (3)                                 | 116 (256)        | 3     |
| 610 (24) | 0.17 (6)                                | 0.13 (4 <sup>1</sup> / <sub>2</sub> )    | 140 (310)        | 4     |
| 800 (32) | 0.24 (8 <sup>1</sup> / <sub>2</sub> )   | 0.17 (6)                                 | 162 (355)        | 5     |
| 950 (37) | 0.30 (10 <sup>1</sup> / <sub>2</sub> )  | 0.21 (7 <sup>1</sup> / <sub>4</sub> )    | 198 (435)        | 5     |

\* Including sidecutters. Width less sidecutters deduct 25mm (1 in).

## BACKHOE ATTACHMENTS – Deep Profile Bucket

| Width*    | Capacity SAE                                       |  | Weight (+ Teeth) |       |
|-----------|--|--|------------------|-------|
|           | Rated m <sup>3</sup> (ft <sup>3</sup> )            | Struck m <sup>3</sup> (ft <sup>3</sup> ) | kg (lb)          | Teeth |
| 305 (12)  | 0.09 (3)   | 0.07 (2 <sup>1</sup> / <sub>2</sub> )    | 102 (225)        | 3     |
| 457 (18)  | 0.16 (5 <sup>1</sup> / <sub>2</sub> )              | 0.13 (4 <sup>1</sup> / <sub>2</sub> )    | 122 (269)        | 3     |
| 610 (24)  | 0.23 (8)   | 0.18 (6 <sup>1</sup> / <sub>4</sub> )    | 142 (314)        | 4     |
| 800 (32)  | 0.30 (10 <sup>1</sup> / <sub>2</sub> )             | 0.24 (8 <sup>1</sup> / <sub>2</sub> )    | 163 (359)        | 5     |
| 950 (37)  | 0.38 (1 <sup>1</sup> / <sub>2</sub> ) <sup>†</sup> | 0.30 (10 <sup>1</sup> / <sub>2</sub> )   | 183 (403)        | 5     |
| 1100 (43) | 0.48 (1 <sup>3</sup> / <sub>8</sub> ) <sup>†</sup> | 0.34 (12)                                | 203 (448)        | 6     |

\* Including sidecutters. Width less sidecutters deduct 25mm (1 in). <sup>†</sup> Capacity in cu.yd.

## BACKHOE DIMENSIONS

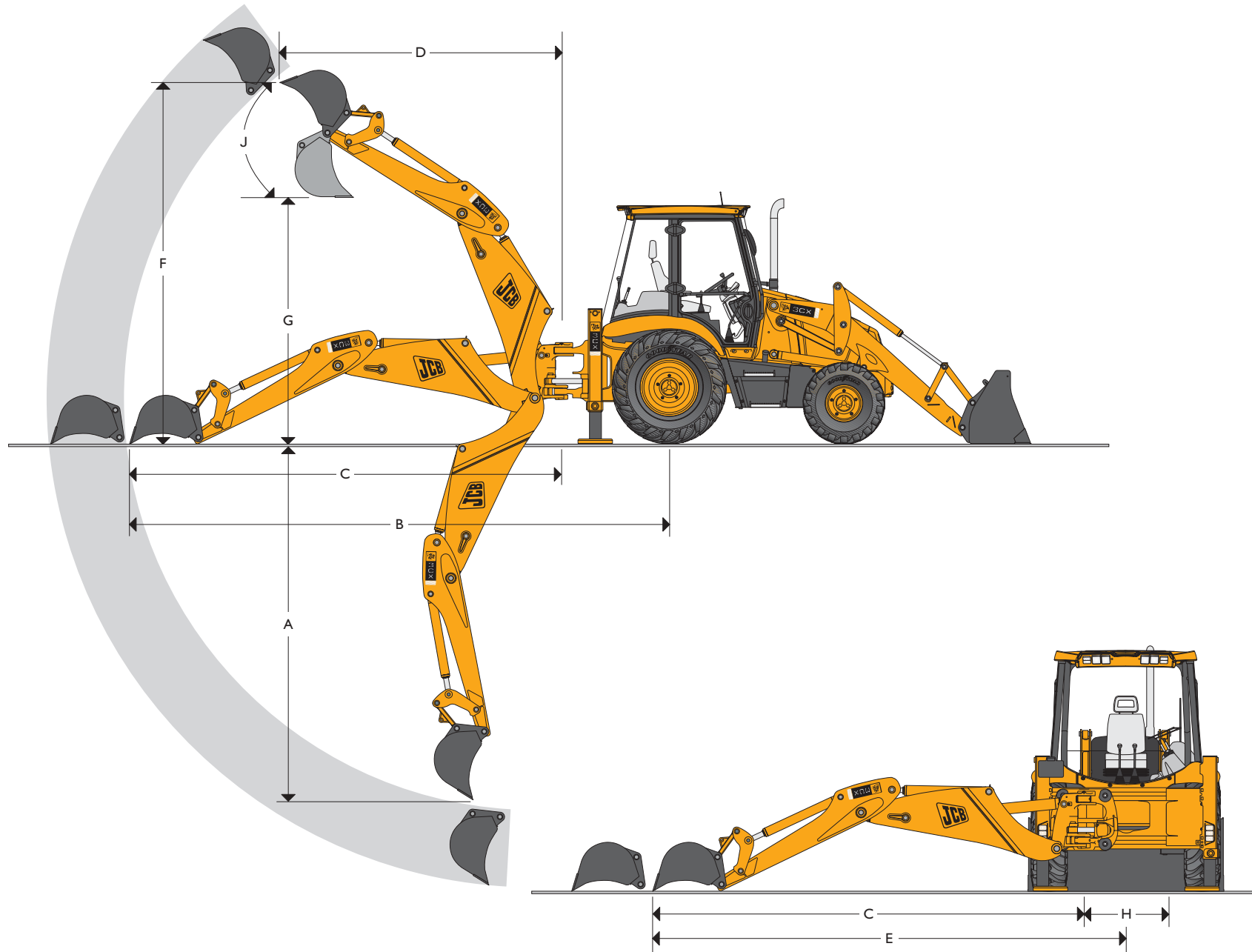
|   |                          | Standard Dipper | Extradig     |
|---|--------------------------|-----------------|--------------|
|   |                          | m (ft-in)       | m (ft-in)    |
| A SAE max dig depth                         | Ext                      | –               | 5.46 (17-11) |
|   | Ret                      | 4.24 (13-11)    | 4.24 (13-11) |
| SAE 2ft flat bottom                         | Ext                      | –               | 5.43 (17-10) |
|   | Ret                      | 4.21 (13-10)    | 4.21 (13-10) |
| Maximum dig depth with deep profile bucket  | Ext                      | –               | 5.97 (19-7)  |
|   | Ret                      | 4.75 (15-7)     | 4.75 (15-7)  |
| B Reach – ground level to rear wheel centre | Ext                      | –               | 7.87 (25-10) |
|   | Ret                      | 6.72 (22-1)     | 6.72 (22-1)  |
| C Reach – ground level to slew centre       | Ext                      | –               | 6.52 (21-5)  |
|   | Ret                      | 5.37 (17-7)     | 5.37 (17-7)  |
| D Reach – at full height to slew centre     | Ext                      | –               | 3.66 (12-0)  |
|   | Ret                      | 2.74 (9-0)      | 2.74 (9-0)   |
| E Side reach – to centre line of machine    | Ext                      | –               | 7.09 (23-3)  |
|   | Ret                      | 5.94 (19-6)     | 5.94 (19-6)  |
| F SAE operating height                      | Ext                      | –               | 6.35 (20-10) |
|   | Ret                      | 5.53 (18-2)     | 5.53 (18-2)  |
| G Maximum loadover height                   | Ext                      | –               | 4.72 (15-6)  |
|   | Ret                      | 3.84 (12-7)     | 3.84 (12-7)  |
| SAE loadover height                         | Ext                      | –               | 4.32 (14-2)  |
|   | Ret                      | 3.4 (11-3)      | 3.4 (11-3)   |
| H Total kingpost travel                     |                          | 1.16 (3-10)     | 1.16 (3-10)  |
|   | Narrow rear frame option | 1.05 (3-5)      | 1.05 (3-5)   |
| J Bucket rotation                           | Speed                    | 201°            | 201°         |

## BACKHOE PERFORMANCE

|   |       | Standard Dipper | Extradig     |
|---|-------|-----------------|--------------|
|   |       | kgf (lbf)       | kgf (lbf)    |
| Bucket tearout                              | Speed | 4940 (10870)    | 4940 (10870) |
|   | Power | 5700 (12540)    | 5700 (12540) |
| Dipper tearout                              | Ext   | –               | 2085 (4590)  |
|   | Ret   | 3010 (6620)     | 3010 (6620)  |
| Lift capacity of bucket pivot at full reach |       | kg (lb)         | kg (lb)      |
|   | Ext   | –               | 990 (2108)   |
|   | Ret   | 1490 (2740)     | 1250 (2750)  |



# JCB BACKHOE LOADER | 3CX





## A GLOBAL COMMITMENT TO QUALITY

JCB's total commitment to its products and customers has helped it grow from a one-man business into Britain's largest privately owned manufacturer of backhoe loaders, crawler excavators, wheeled excavators, telescopic handlers, wheeled loaders, dump trucks, rough terrain fork lifts, industrial fork lifts, mini/midi excavators, skid steer loaders and tractors.

By making constant and massive investments in the latest production technology, the JCB factories have become some of the most advanced in Europe.

By leading the field in innovative research and design, extensive testing and stringent quality control, JCB machines have become renowned all over the world for performance, value and reliability.

And with a global sales and service network of over 400 distributors and agents, the company exports over 70% of its production to all five continents.

Through setting the standards by which others are judged, JCB has become one of Britain's most impressive success stories.

